

CITY OF PRINCE RUPERT

COW BAY/ATLIN UPLAND ROAD CLOSURE BYLAW NO 3364, 2015

A BYLAW TO CLOSE AND REMOVE THE DEDICATION OF A CERTAIN HIGHWAY/ROAD

WHEREAS the Council of the City of Prince Rupert (“**Council**”) has the authority under the *Community Charter* to close a highway, or a portion of it, to traffic and to remove the dedication of it as highway;

WHEREAS Council considers it desirable to close up a portion of highway to enable its consolidation with the adjacent property for the purpose of creating a new parcel;

WHEREAS the portion of highway to be closed and to have the dedication removed is not a highway, or part of a highway, that provides access to the ocean or a lake, river or other stream or watercourse;

WHEREAS no owner will be deprived of access to their property as a result of the closure of the subject portion of highway;

WHEREAS no transmission or distribution facilities or works of any utility operator will be affected by the closure of the subject portion of highway;

WHEREAS as required by Section 40 of the *Community Charter*, notice of Council's intention to undertake this highway closure was published in a newspaper, once each week for two consecutive weeks, and persons who considered themselves affected by this Bylaw have been provided an opportunity to make representations to Council; and

WHEREAS as required by Section 41(3) of the *Community Charter*, this Bylaw has been approved by the Minister responsible for the *Transportation Act*.

NOW THEREFORE THE COUNCIL of the City of Prince Rupert enacts as follows:

1. This Bylaw may be cited for all purposes as "**Cow Bay/Atlin Upland Road Closure Bylaw No. 3364, 2015**".
2. That approximately 0.106 ha portion of Cow Bay Road originally dedicated as road in the Land Title Office by Plan PRP46329 and Plan PRP46310, Waterfront Block F, District Lot 251, Range 5 Coast District, and shown outlined in bold on Reference Plan EPP19221, prepared by Guy Derry, B.C.L.S., a reduced copy of which is attached hereto as Schedule "A" (the “**Closed Road**”) is hereby stopped up and closed to traffic of all types.
3. The dedication as highway of the Closed Road is hereby removed.
4. The Mayor and the Corporate Officer for the City of Prince Rupert are hereby authorized to execute such transfers, deeds of land, survey plans, land title applications and other documents, and to affix the Corporate Seal of the City of Prince Rupert thereto, as may be necessary to effect this road closure and removal of highway dedication and to transfer title to the Closed Road to the owner of lands adjacent to the Closed Road for the purposes of consolidating the Closed Road with the said adjacent lands.

Schedule "A" attached hereto forms part of this Bylaw.

Read the First time the 13th day of April, 2015.

Read the Second time the 13th day of April, 2015.

Read the Third time the 13th day of April, 2015.

Notice given in accordance with sections 40 and 94 of the *Community Charter* by way of posting in the required locations on the 17th day of March, 2015 and by publication in the Prince Rupert Northern View on the 18th day of 2015 and on the 25th day of 2015.

Approved by the Minister responsible for the transportation act on the 16 day of April, 2015.

Adopted this 16th day of April, 2015.

Mayor

Corporate Officer

Schedule "A"

REFERENCE PLAN TO ACCOMPANY CITY OF PRINCE RUPERT ENLAW NO. 2364, 2015
 CLOSING A PORTION OF ROAD DEDICATED BY PLAN PRP46329 AND PLAN PRP44310,
 WATERFRONT BLOCK F, DISTRICT LOT 251, RANGE 5, COAST DISTRICT,
 PRESENTLY TO SECTION 4 OF THE COMMUNITY CHARTER
 PRESENTLY TO SECTION 150 OF THE LAND TITLE ACT
 WITHIN DISTRICT LOT 251

PLAN EPR19221
 PRELIMINARY

SCALE 1:750

1 2 3 4 5 6 7 8 9 10 11 12 13 14 15 16 17 18 19 20 21 22 23 24 25 26 27 28 29 30 31 32 33 34 35 36 37 38 39 40 41 42 43 44 45 46 47 48 49 50 51 52 53 54 55 56 57 58 59 60 61 62 63 64 65 66 67 68 69 70 71 72 73 74 75 76 77 78 79 80 81 82 83 84 85 86 87 88 89 90 91 92 93 94 95 96 97 98 99 100

LEGEND

1. UNIMPROVED LOT WITH FRONT DRIVE

2. UNIMPROVED LOT WITH FRONT DRIVE

3. UNIMPROVED LOT WITH FRONT DRIVE

4. UNIMPROVED LOT WITH FRONT DRIVE

5. UNIMPROVED LOT WITH FRONT DRIVE

6. UNIMPROVED LOT WITH FRONT DRIVE

7. UNIMPROVED LOT WITH FRONT DRIVE

8. UNIMPROVED LOT WITH FRONT DRIVE

9. UNIMPROVED LOT WITH FRONT DRIVE

10. UNIMPROVED LOT WITH FRONT DRIVE

11. UNIMPROVED LOT WITH FRONT DRIVE

12. UNIMPROVED LOT WITH FRONT DRIVE

13. UNIMPROVED LOT WITH FRONT DRIVE

14. UNIMPROVED LOT WITH FRONT DRIVE

15. UNIMPROVED LOT WITH FRONT DRIVE

16. UNIMPROVED LOT WITH FRONT DRIVE

17. UNIMPROVED LOT WITH FRONT DRIVE

18. UNIMPROVED LOT WITH FRONT DRIVE

19. UNIMPROVED LOT WITH FRONT DRIVE

20. UNIMPROVED LOT WITH FRONT DRIVE

21. UNIMPROVED LOT WITH FRONT DRIVE

22. UNIMPROVED LOT WITH FRONT DRIVE

23. UNIMPROVED LOT WITH FRONT DRIVE

24. UNIMPROVED LOT WITH FRONT DRIVE

25. UNIMPROVED LOT WITH FRONT DRIVE

26. UNIMPROVED LOT WITH FRONT DRIVE

27. UNIMPROVED LOT WITH FRONT DRIVE

28. UNIMPROVED LOT WITH FRONT DRIVE

29. UNIMPROVED LOT WITH FRONT DRIVE

30. UNIMPROVED LOT WITH FRONT DRIVE

31. UNIMPROVED LOT WITH FRONT DRIVE

32. UNIMPROVED LOT WITH FRONT DRIVE

33. UNIMPROVED LOT WITH FRONT DRIVE

34. UNIMPROVED LOT WITH FRONT DRIVE

35. UNIMPROVED LOT WITH FRONT DRIVE

36. UNIMPROVED LOT WITH FRONT DRIVE

37. UNIMPROVED LOT WITH FRONT DRIVE

38. UNIMPROVED LOT WITH FRONT DRIVE

39. UNIMPROVED LOT WITH FRONT DRIVE

40. UNIMPROVED LOT WITH FRONT DRIVE

41. UNIMPROVED LOT WITH FRONT DRIVE

42. UNIMPROVED LOT WITH FRONT DRIVE

43. UNIMPROVED LOT WITH FRONT DRIVE

44. UNIMPROVED LOT WITH FRONT DRIVE

45. UNIMPROVED LOT WITH FRONT DRIVE

46. UNIMPROVED LOT WITH FRONT DRIVE

47. UNIMPROVED LOT WITH FRONT DRIVE

48. UNIMPROVED LOT WITH FRONT DRIVE

49. UNIMPROVED LOT WITH FRONT DRIVE

50. UNIMPROVED LOT WITH FRONT DRIVE

51. UNIMPROVED LOT WITH FRONT DRIVE

52. UNIMPROVED LOT WITH FRONT DRIVE

53. UNIMPROVED LOT WITH FRONT DRIVE

54. UNIMPROVED LOT WITH FRONT DRIVE

55. UNIMPROVED LOT WITH FRONT DRIVE

56. UNIMPROVED LOT WITH FRONT DRIVE

57. UNIMPROVED LOT WITH FRONT DRIVE

58. UNIMPROVED LOT WITH FRONT DRIVE

59. UNIMPROVED LOT WITH FRONT DRIVE

60. UNIMPROVED LOT WITH FRONT DRIVE

61. UNIMPROVED LOT WITH FRONT DRIVE

62. UNIMPROVED LOT WITH FRONT DRIVE

63. UNIMPROVED LOT WITH FRONT DRIVE

64. UNIMPROVED LOT WITH FRONT DRIVE

65. UNIMPROVED LOT WITH FRONT DRIVE

66. UNIMPROVED LOT WITH FRONT DRIVE

67. UNIMPROVED LOT WITH FRONT DRIVE

68. UNIMPROVED LOT WITH FRONT DRIVE

69. UNIMPROVED LOT WITH FRONT DRIVE

70. UNIMPROVED LOT WITH FRONT DRIVE

71. UNIMPROVED LOT WITH FRONT DRIVE

72. UNIMPROVED LOT WITH FRONT DRIVE

73. UNIMPROVED LOT WITH FRONT DRIVE

74. UNIMPROVED LOT WITH FRONT DRIVE

75. UNIMPROVED LOT WITH FRONT DRIVE

76. UNIMPROVED LOT WITH FRONT DRIVE

77. UNIMPROVED LOT WITH FRONT DRIVE

78. UNIMPROVED LOT WITH FRONT DRIVE

79. UNIMPROVED LOT WITH FRONT DRIVE

80. UNIMPROVED LOT WITH FRONT DRIVE

81. UNIMPROVED LOT WITH FRONT DRIVE

82. UNIMPROVED LOT WITH FRONT DRIVE

83. UNIMPROVED LOT WITH FRONT DRIVE

84. UNIMPROVED LOT WITH FRONT DRIVE

85. UNIMPROVED LOT WITH FRONT DRIVE

86. UNIMPROVED LOT WITH FRONT DRIVE

87. UNIMPROVED LOT WITH FRONT DRIVE

88. UNIMPROVED LOT WITH FRONT DRIVE

89. UNIMPROVED LOT WITH FRONT DRIVE

90. UNIMPROVED LOT WITH FRONT DRIVE

91. UNIMPROVED LOT WITH FRONT DRIVE

92. UNIMPROVED LOT WITH FRONT DRIVE

93. UNIMPROVED LOT WITH FRONT DRIVE

94. UNIMPROVED LOT WITH FRONT DRIVE

95. UNIMPROVED LOT WITH FRONT DRIVE

96. UNIMPROVED LOT WITH FRONT DRIVE

97. UNIMPROVED LOT WITH FRONT DRIVE

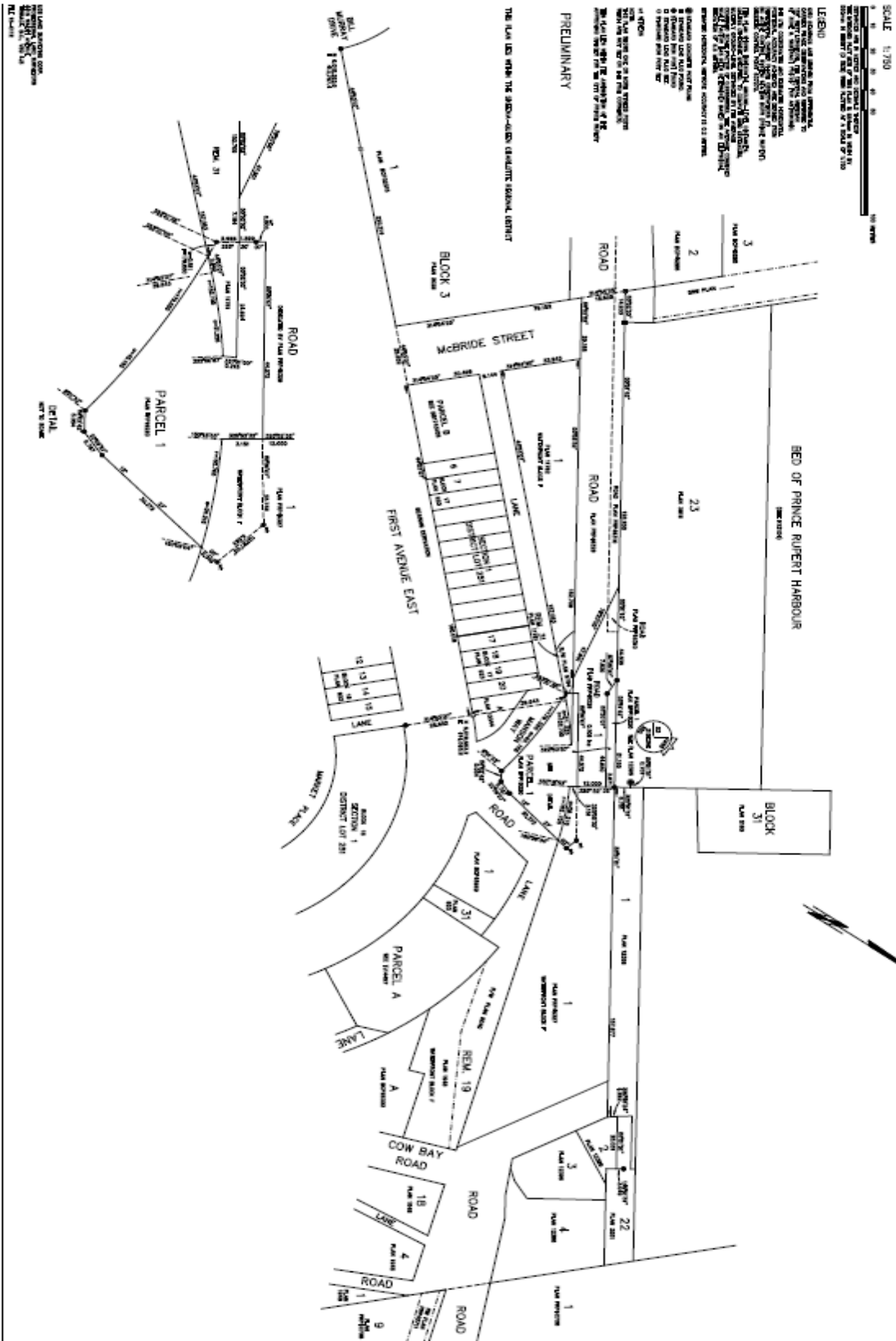
98. UNIMPROVED LOT WITH FRONT DRIVE

99. UNIMPROVED LOT WITH FRONT DRIVE

100. UNIMPROVED LOT WITH FRONT DRIVE

PRELIMINARY

THE LINES SHOW THE APPROXIMATE EXISTING BOUNDARIES



SCALE 1:750

PLAN EPR19221
 PRELIMINARY